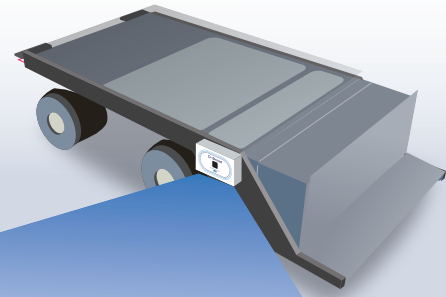


D Broad Mini

Wireless Power Transfer System for
Charging Automatic Guided Vehicles
(AGV)



Smallest product in line-up

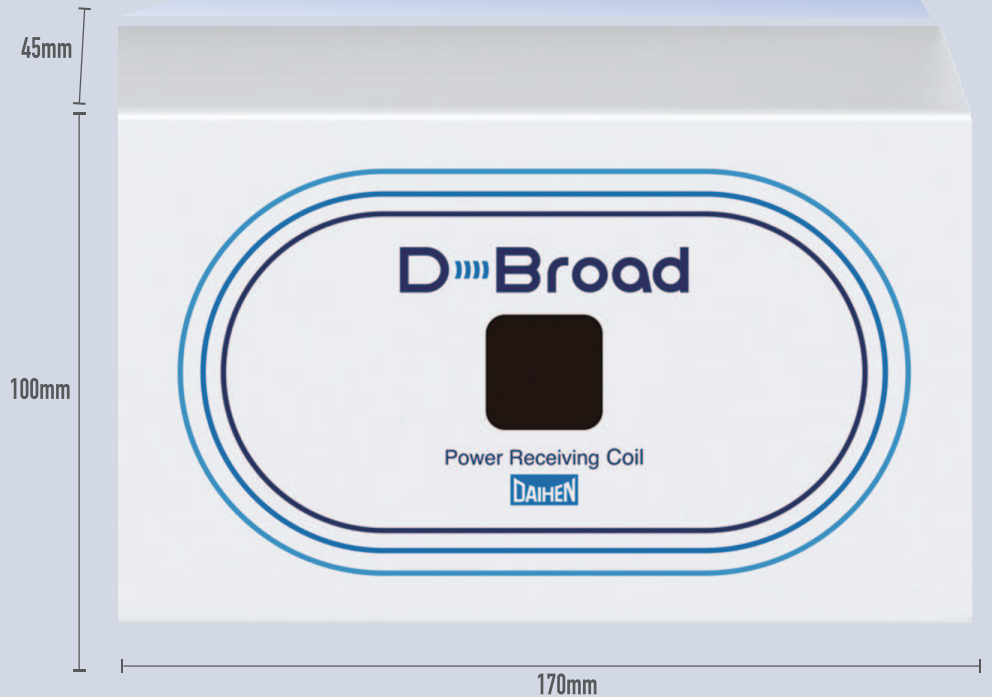
20A power transfer,
size reduced to less than half

Compact Design for confined spaces

Perfect for areas that have
limited space

Simple wiring reduces safety risks

Only the main cord required,
reduces risk of shocks and falls



Benefits of Contact-less Charging

- ROBUST TO MISALIGNMENT**
Even if the coil gap shifts, a preset level of electric power is supplied with high efficiency.
- EASY INSTALLATION AND RELOCATION**
Flexible support not only for initial set up, but also for production line updates.
- LARGE CAPACITY LINEUP FOR RAPID CHARGING**
Charge parameters can be freely. Unit supports rapid-charging devices.

Wireless power transfer makes it easy to operate AGV's 24 hours a day!

D-Broad Mini

Wireless Power Transfer System for Charging Automatic Guided Vehicles (AGV)

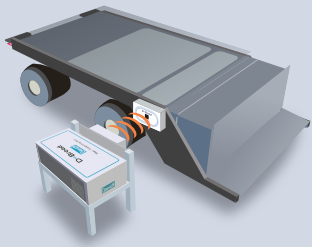


Installation Samples

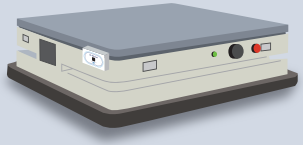
Runs 100m on a 43-second charge
Power consumption 4A

Runs 100m on a 47-second charge
Power consumption 5A

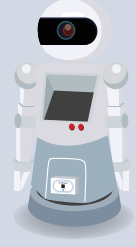
Runs 100m on a 47-second charge
Power consumption 5A



Under-cart AGVs



Small guide-less Auto Vehicle



Service Robot

High-efficiency wireless power transfer system can be mounted on all types of AGVs (Automatic Guided Vehicles)

Specifications

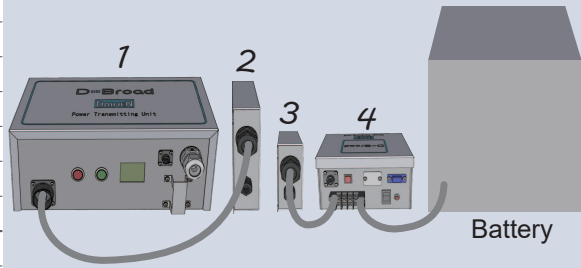
D-Broad Mini		
Common to all units	Distance between the power transmitting and power receiving coil units	Charging current does not change even if the distance changes
	AGV stop position misalignment allowable range(In the traveling direction)	Charging current does not change even if the position deviates by ± 10mm (±0.4")
	Operating temperature range	0-40
	Operating humidity range	20-80% (No dew condensation)
	Storage temperature range	-20-55
	Storage humidity range	20-80% (No dew condensation)
	maintenance cycle	7 years (Aluminum electrolytic capacitor, fan, semiconductor parts)
Power transmitting unit	Number of phases	Single-phase
	Rated input frequency	50/60Hz
	Rated input voltage	200/220V±10
	Rated input power	1.2kW
	Required power supply capacity	1.4kVA
	Weight (W×D×H)	Approx. 5kg
	External dimensions	340x230x140mm (Excluding protrusions)
Power transmitting coil unit	Weight (W×D×H)	Approx. 2kg
	External dimensions	170x45x135mm (Excluding protrusions)
Power receiving unit	Maximum charging voltage	30V
	Maximum current	20A
	Weight (W×D×H)	Approx. 2kg
Power receiving coil unit	External dimensions	145x135x80mm (Excluding protrusions)
	Weight (W×D×H)	Approx. 2kg
Power receiving coil unit	External dimensions	170x45x100mm (Excluding protrusions)

*Product specifications and design are subject to change without prior notice

Options

Cable	Line up	Notes
Cable 1	(2m optional cable) 1m cable included as standard	(1) Power transmitting unit ↔ (2) Power transmitting coil unit
Cable 2		(3) Power receiving coil unit ↔ (4) Power receiving unit
Cable 3	Round terminals M6 (1m,2m)	(4) Power receiving unit ↔ (5) Battery)
	Round terminals M8 (1m,2m)	
	D1 plug connector (1m,2m)	
	SB50 connector (1m)	

Configuration



- 1 Power transmitting unit 1 unit
- 2 Power transmitting coil unit 1 unit
(includes 1m cable for connecting to power transmitting unit)
- 3 Power receiving coil unit 1 unit
(includes 1m cable for connecting to power transmitting unit)
- 4 Power receiving unit 1 unit

Precaution for Use

- Use this system in places where not contacted by water.
- Use this system in places where not exposed to direct sunlight.
- Do not place metallic objects between the power transmitting and receiving coils.
- Use the system as a complete set. (This product cannot be combined with wireless power transfer systems of other manufacture.)
- Permission is required for installation because this equipment uses high frequencies (when installed in Japan).



TOYOTA TSUSHO AMERICA, INC.

DISCLAIMER: THE INFORMATION PRESENTED IN THIS SHEET REGARDING THE PRODUCT IS BASED ON TESTING PERFORMED, AND DATASHEETS PROVIDED, BY THE MANUFACTURER. TTCI DOES NOT MAKE ANY REPRESENTATIONS OR WARRANTIES OF ANY KIND, AND IS NOT RESPONSIBLE OR LIABLE FOR ANY (I) ERRORS OR DISCREPANCIES RELATING TO THE REPRESENTATION OR DESCRIPTION OF THE PRODUCT OR ANY (II) EXPENSES, LOSSES OR DAMAGES OF ANY KIND IN CONNECTION WITH THE LEASE, PURCHASE OR USE OF THE PRODUCT. ALL SALES OF THE PRODUCT BY TTCI WILL BE SUBJECT TO BUYERS' ACCEPTANCE OF THE TERMS AND CONDITIONS OF TTCI'S TERMS AND CONDITIONS OF SALE.

Looking for More Information?

For all inquiries, please submit a request on our Online Contact Form